

+ Intervention

Grades K-12

# imagine mypath<sup>®</sup>

Diagnostic-driven, personalized learning to  
support intervention in reading and math





# From Gaps to Growth

## Personalized intervention that helps students achieve grade-level success in reading and math

The number and diversity of student learning needs in a typical classroom that require individualized interventions often exceeds the time and resources available to teachers. Imagine MyPath accelerates learning with personalized, adaptive instruction that prioritizes critical skills in an engaging, age-appropriate learning environment.

# 44%

Percentage of students who began the 2023–24 school year behind grade level in at least one academic subject.

*Source: National Center for Education Statistics (NCES)*

### Imagine MyPath is grounded in five research-based principles:

1. **Prioritize content** and adapt learning based on student performance
2. **Provide accessible, explicit, and scaffolded instruction** to ensure success among academically diverse learners
3. **Incorporate evidence-based practices** for teaching reading and math
4. **Deliver actionable data** to inform instructional decision-making
5. **Optimize student** motivation and engagement



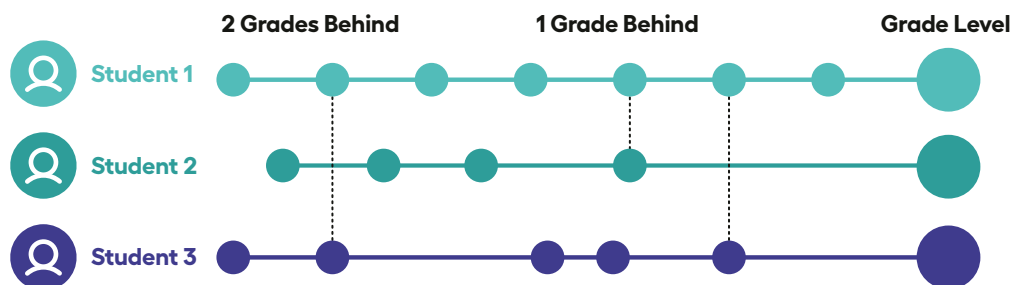
# Move Students Forward, Faster

## Imagine MyPath prioritizes grade-level content and adapts instruction to optimize student learning

A unique, research-based instructional design focuses on the skills that are essential to success in grade-level work and accelerates students through content they have already mastered — so they can more efficiently catch up, keep up, and move forward.

### Prioritization and adaptivity with Smart Sequencer™

Imagine Learning's proprietary Smart Sequencer targets learning gaps and pinpoints prerequisite skills needed to master grade-level standards. Using student proficiency data, it determines which lessons a student needs, the order in which they need them, and then dynamically adjusts the Individual Learning Path (ILP) as the student progresses to optimize pathways to skill proficiency.



Learn more  
about Smart  
Sequencer

## On-Demand Tutoring in Imagine MyPath Math empowers students with real-time help

NEW

### On-Demand Tutoring includes:

- A deeply trained cohort of certified teachers
- Availability for grades 3–12
- One-on-one rigorous instruction via chat or voice; available in English and Spanish
- Dynamic visual models via a two-way interactive whiteboard

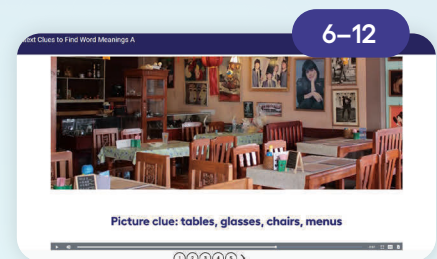


# Interactive, Age-Appropriate Student Experience

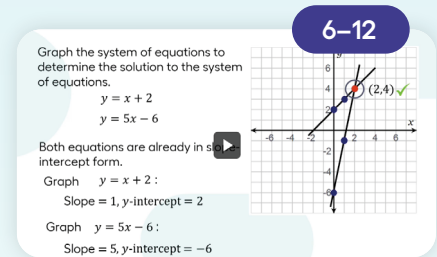
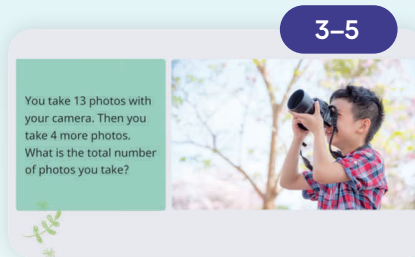
## Keep students motivated and engaged with differentiation for both skill and age levels

Imagine MyPath ensures that each student's personalized learning journey, regardless of their current skill level, reflects both their knowledge and maturity. Even learners far below grade level will experience lessons in a presentation style appropriate for their chronological age.

### Sample Reading Lessons



### Sample Math Lessons



## Interactive student experience promotes self-efficacy

### For K–2 Students

- Larger buttons, icons, and action items
- Audio supports for early readers
- Motivation: earn stars and unlock sidekicks and backgrounds

### For 3–5 Students

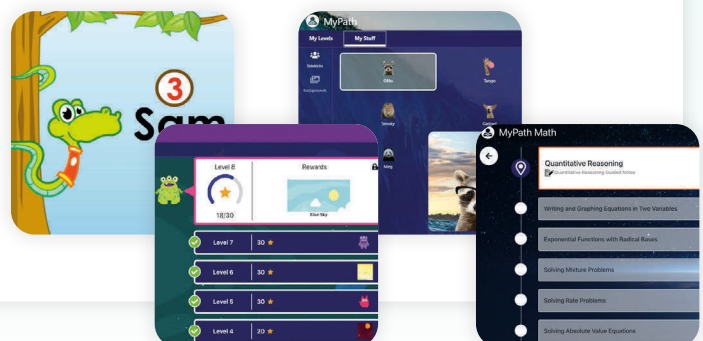
- Keep earning stars and unlocking extras while leveling up

### For 6–8 Students

- Unlock new backgrounds and sidekicks designed especially for middle schoolers

### For 9–12 Students

- High schoolers control their learning environment so they can focus on completing work, rejoining the general classroom, and graduating on time





# Empower Responsive Teaching

## Customize learning with robust teaching resources

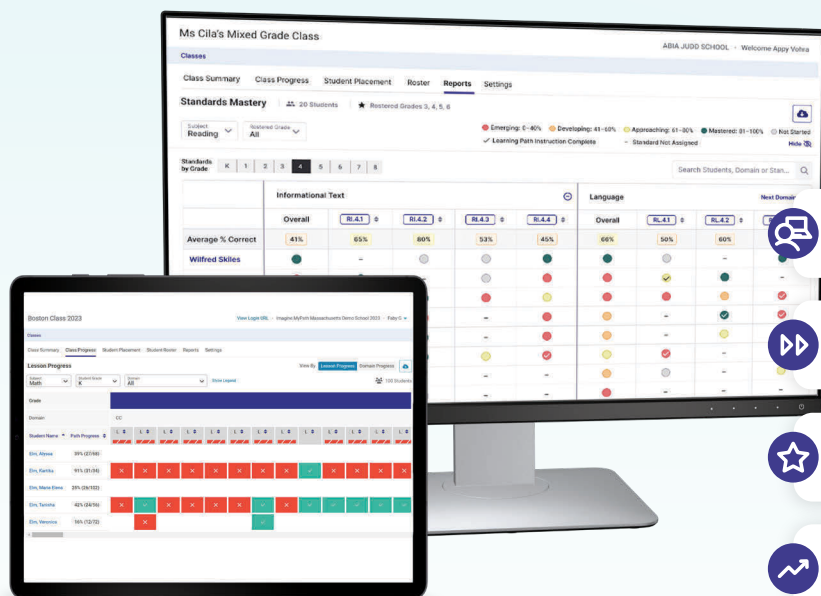
Imagine MyPath's Assignment Builder lets you explore, preview, and assign individual lessons and custom learning paths.

- Explore available lessons, and printable teaching resources that support individual, small-group, and whole-class instruction
- Preview age-appropriate content delivered automatically to your students in their individual learning paths — search by subject, skill, or grade
- Assign learning resources to your students for additional practice, measuring proficiency, and reteaching



## Actionable insights drive growth and let teachers focus on what students need most

Powerful, real-time data gives educators valuable insights to inform instructional decisions and drive growth.



### ENGAGEMENT

Are my students active in their learning?



### PROGRESS

Are my students on track and on pace?



### ACHIEVEMENT

Are my students demonstrating content mastery?



### GROWTH

Are my students demonstrating growth?

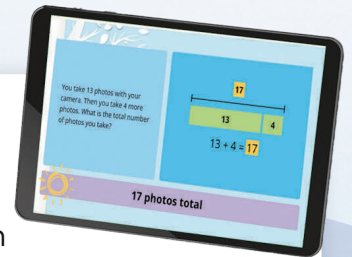


# Evidence-Based Instructional Practices

Accessible, explicit, and scaffolded instruction ensures success among diverse learners

## Math

- Efficiently scales students up to grade level by prioritizing key math domains and emphasizing their essential skills within them
- Develops conceptual understanding and procedural fluency by incorporating real-world examples, visual representations, and math models
- Emphasizes math vocabulary in K–5 lessons — critical for mathematical comprehension and achievement



## Reading

- Prioritizes building grade-level reading comprehension with a mix of literary and informational texts
- Students performing two or more grade levels below their rostered grade receive age-appropriate review of essential skills in phonics, fluency, and vocabulary development
- Direct instruction videos model fluent oral reading and the use of different metacognitive reading strategies
- Gradually increases text complexity to move students toward grade-level reading



## Scaffolds provide access for all learners

### Multilingual Support

- On-screen translation in 60+ languages
- Text-to-speech read-alouds in 45+ languages
- K–5 math lessons in Spanish



### Interactive and Graphic Scaffolds

- Hyperlinked vocabulary words and metacognitive bubbles
- Calculator and graphing tools
- Graphic organizers



### Sensory Scaffolds

- Lessons combine video, audio, text, and narration; multimedia support; icons; and interactive manipulatives





# imagine+ assessment

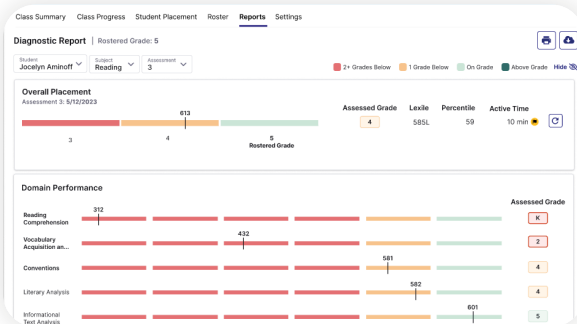
NEW

## Power Personalized Learning with a Comprehensive Assessment Suite

Discover a comprehensive and flexible system of screening, diagnostic, and formative assessments that delivers precise, personalized learning and supports informed instructional decisions.

### Imagine+ Diagnostic

Measure skills across various content areas and inform Imagine MyPath's individualized learning paths based on domain-level insights using multi-stage, adaptive assessments.



### Imagine+ Screener

Identify students in grades PreK–3 at risk of dyslexia and other reading challenges by assessing key literacy skills predictive of future reading success.



### Imagine+ Formatives

Support daily classroom instruction and intervention with 1000+ standards-aligned, prebuilt assessments.



## Flexibility to build on your existing assessment data

Seamlessly complement the assessments already in use in your school or district. Imagine+ Assessment makes it easy to administer the specific assessments that meet your goals, enhancing your existing data to guide instruction, avoid over-testing, and personalize instruction with Imagine MyPath.

**Our assessment partners:**

nwea  
**map**  
Renaissance





## Accelerate success

Prioritize critical skills and engage students to efficiently get them back on track with personalized, adaptive, and age-appropriate intervention.



[imaginelearning.com/mypath](https://imaginelearning.com/mypath)

877-725-4257 • [solutions@imaginelearning.com](mailto:solutions@imaginelearning.com)