

Built for Multilingual Learners

Support the fastest growing student population in the U.S.

For more than 20 years, Imagine Language & Literacy® has been dedicated to empowering English learners. Our research-based and evidence-backed curriculum integrates the latest innovations in **language acquisition and literacy development**, helping millions of students gain proficiency and confidence in academic and conversational English.

Specialized Support for Multilingual Learners

Unique scaffolds and resources for MLs include language development activities and optional first-language support.

- Provides first-language support: audio support** is available in **20 languages**. As students become more proficient in English, first-language support is strategically withdrawn to gradually transition them to independence.
- Enables cross-linguistic connections:** students recognize **initial sounds in English that are also used in their first language**. The program also **addresses English sounds not found in a student’s first language** (e.g., the /sh/ sound in English, which is not found in Spanish).
- Builds on language commonalities:** students learn about rhyme **in their first language to build background knowledge**. Next, they’re taught rhyming sounds in English with modeling, visuals, and interactive practice.



In addition, multilingual learners...

receive explicit instruction in:

- Five critical literacy skills
- Oral language skills
- Basic and academic vocabulary
- Conversational phrases

have structured opportunities to:

- Practice skills previously taught
- Develop oral and written English language proficiency

are provided with:

- Instruction and practice tied to a connected text
- Visual and verbal scaffolds
- Progress monitoring
- Actionable data for specific skill or standard gaps

The results: significant language gains

After using Imagine Language & Literacy, English learners scored:

70%

higher in reading comprehension on the WIDA ACCESS 2.0

50%

higher in reading and writing on the WIDA ACCESS 2.0

30%

higher in listening comprehension on the WIDA ACCESS 2.0a

Results show the growth from winter 2019 to winter 2020



Aligns to multiple English language proficiency standards:

✓ WIDA ✓ WIDA PRIME ✓ ELPA 21 ✓ HI ELPS ✓ TX ELPS ✓ CA ELD ✓ NY ENL ✓ NY ESL



Unmatched audio language support

Audio language support provides instructions and corrective feedback in students' first language while they work through specific activities. The goal is to provide strategic scaffolding that is gradually withdrawn as students demonstrate English proficiency to keep students feeling challenged but not overwhelmed — resulting in significant gains more quickly.

First-language audio support available in:

- **Activity instructions** — provides instructions to students in their first language when they initially see an activity. The next two times the student sees the activity, they have the option of hearing translated instructions. After that, all instructions are given in English.
- **Vocabulary introductions** — new vocabulary words are initially translated into their first language with a student friendly definition before teaching them the new word in English.
- **Phonemic awareness activities** — students learn to recognize sounds from their first language that are also used in English, as well as sounds that are found in English but not in their first language.
- **Instruction of abstract concepts** — difficult concepts like rhyming or answering inferential questions are explained in the student's first language before teaching the same concept in English.

Supported audio languages

Arabic	Hmong	Russian
Chinese: Cantonese	Japanese	Somali
Chinese: Mandarin	Korean	Spanish
French	Marshallese	Tagalog
Haitian Creole	Portuguese	Vietnamese

Additional print language resources

Language booklets for each supported language include family letters, vocabulary practice, reading texts, a translated vocabulary glossary, and a certificate of completion in the first language. The printouts have instructions in the student's first language with exercises and questions in English.

Supported print languages

Bengali	Farsi	Polish	Urdu
Burmese	Karen	Swahili	

- Translated glossary

Write, Tell, or Draw
Napisz, opowiedz lub narysuj opc
When did your friend help you?
Kiedy pomogła ci koleżanka

needed
Potrzebowałem...

- Writing support

Imagine Language & Literacy Glossary
Słowniczek Imagine Learning

This glossary lists the vocabulary words explicitly taught in the Imagine Learning software program, their definitions, and the activity that teaches each word. Not every meaning for each word is provided as a definition.

G - Students can click on glossary words within leveled text.
LT - Students encounter contextual vocabulary through leveled text.
WA - In Word Alert, students develop advanced academic vocabulary.
WT - Word-a-Tron teaches students the meaning of key words.
WV - Students develop academic vocabulary and learn the meaning of words.

W tym słowniczku zamieszczono słowa należące do programu wraz z definicjami oraz czynnościami uczenia danego słowa w wszystkie znaczenia każdego słowa.

G - Uczeń może kliknąć na słowo ze słowniczka danego programu.
LT - Uczeń napotyka słownictwo kontekstu z pomocą tekstu zrozumiemie tekstu.
WA - Czyli Word Alert (uwaga na słowo!), uczeń pracuje nad słowami.
WT - Czyli konkurs Word-a-Tron, zapoznaje ucznia ze znaczeniem słowa, zanim uczeń przejdzie do tekstu.
WV - Czyli Word Videos. Uczniowie pracują nad słownictwem najważniejszych słówek z wideofilmów WV.

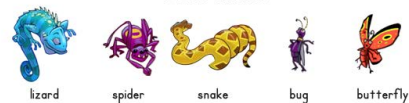
Word	Definition	Where	Activity
słowo	definicja	gdzie	aktywność
ability	Able to do something.	G, LT	acceler
abominable	Something that is very disgusting.	G	accide
Snowman	A big, hairy, human-like animal that isn't real.	G	accide
above	I'm above you.	WV	accor
abrupt	Sudden or unexpected.	G	
	Agły lub niespodziewany.		

210 Copyright © Imagine Learning

Rodzice, poproście ucznia o nazwanie przedmiotów na tej ilustracji



Wild Animals



lizard spider snake bug butterfly

- Vocabulary practice