

Leading Content-Based Literacy Modules

Participant Handout



Leading Imagine Learning EL Education Content-Based Literacy Modules Session Agenda

Component	Objectives
Welcome	Connect with your fellow teachers and the Imagine Learning EL Team. Review the day's agenda.
What is EL Education? EL Education Design Framework	Review the design principles behind EL Education: Content-based literacy, Guiding Principles, High-level Instructional Practices, and 3 Dimensions of Student Achievement.
How is EL Education structured to support learning? EL Education Structure and Design	Understand the structure and design of the platform and EL Education integration. Learn about year-long planning and where to find these resources. <i>Live</i> navigation of ILC to explore resources.
Break (optional)	Take a break to process your learning
What supports are available at the lesson level? Lesson Planning	Understand how lessons are structured and identify supports available. <i>Live</i> navigation of ILC to explore resources.
Planning to Support Implementation Planning for Year-long Supports	Use the provided chart to begin the process of brainstorming what kinds of support would be needed, utilizing everything participants learn about the structure and design of EL Education.
Closing	Review the day's learning and provide feedback.

Session Learning Targets

- I can describe the key components of literacy instruction in the IL EL curriculum.
- I can utilize my understanding of the structure and design of IL EL Education to provide support to educators.
- I can plan to support educators during implementation

EL Education Design Framework

Guiding Principles

- ✓ Equity Matters
- ✓ Backward Design: Planning with the end in mind and assessing along the way
- ✓ Students excel in diverse and inclusive settings
- ✓ Substantive content matters
- ✓ Students own their own learning
- ✓ Protocols and conversation cues promote student thinking, collaboration, and respect
- ✓ Families and guardians are partners
- ✓ Curriculum as powerful PD

High Leverage Practices

1. Learning Targets
2. Culture of Grappling
3. Checks for Understanding
4. Protocols
5. Total Participation Techniques
6. Questioning
7. Student Discourse
8. Co-creating Anchor Charts

How might you helping a teacher understand how the high leverage practices are grounded in UDL principles?



3 Dimensions of Student Achievement



Mastery of Knowledge and Skills

Standards-aligned instruction and assessment
Focus on critical thinking, communication,
and deeper learning



High-Quality Student Work

Demonstrates complexity, craftsmanship, and authenticity
Evident in performance tasks, conversations,
and responses to prompts



Character

Tools to become effective, ethical learners who work
to make the world a better place
Integrated focus on developing character within
lesson context

Reflection: What shifts in mindset do you think you'll need to lead to support teachers with IL EL Education?

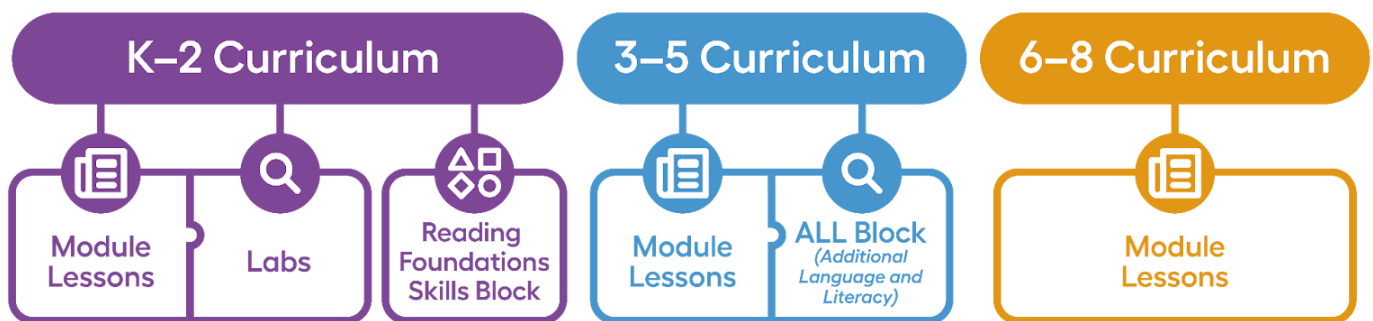
EL Curriculum on ILC: EL Education Structure and Design

Platform Exploration: Choose to either explore the Curriculum Guide or the Planning Hub.

Curriculum Guide	Planning Hub

Reflection: What kinds of supports are available in the Curriculum Guide or the Planning Hub that will help you and your teachers?

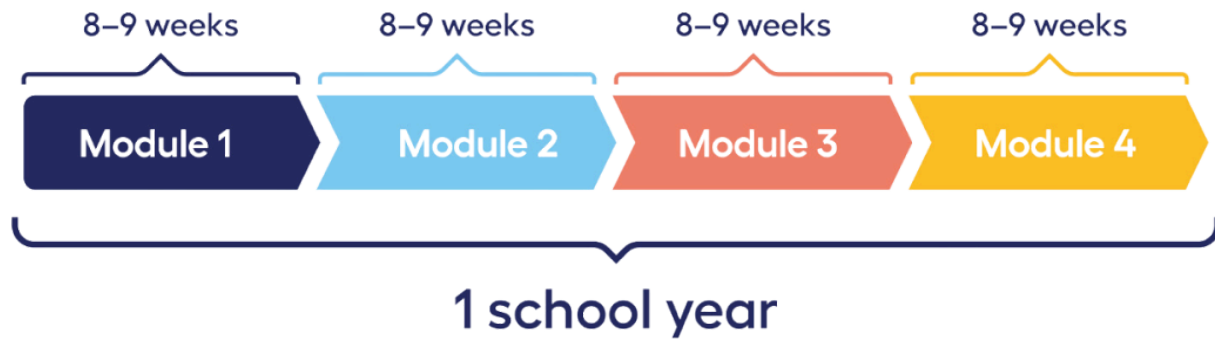
EL Education Core Curriculum Components



The one component that is consistent across all grade bands is _____.

This is where students are working to build knowledge on the topic using close reading.

EL Education Structure and Design: Modules

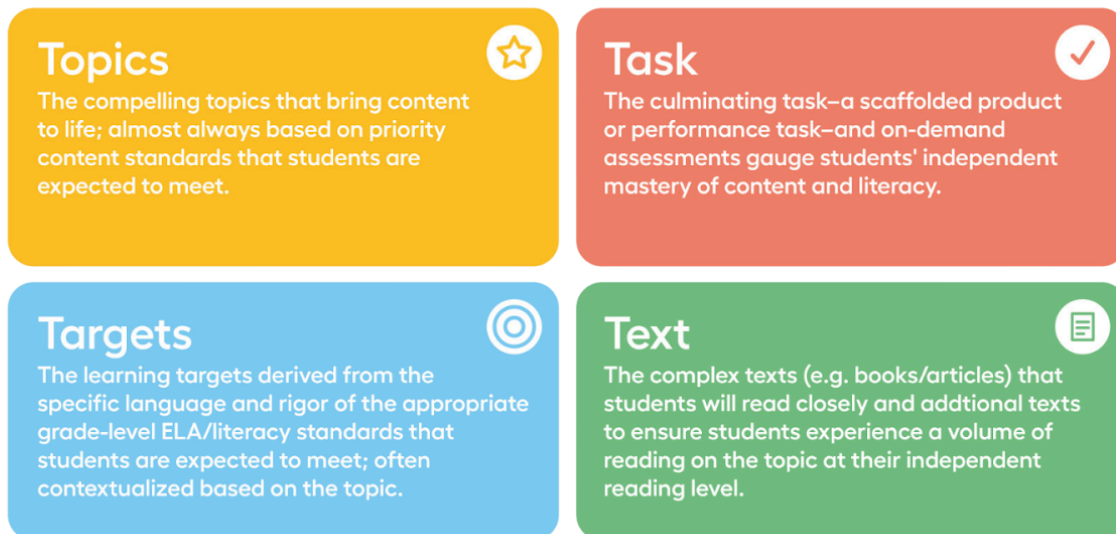


Note: In K–2, module 1 is just 6 weeks to allow time for getting classroom routines and culture in place

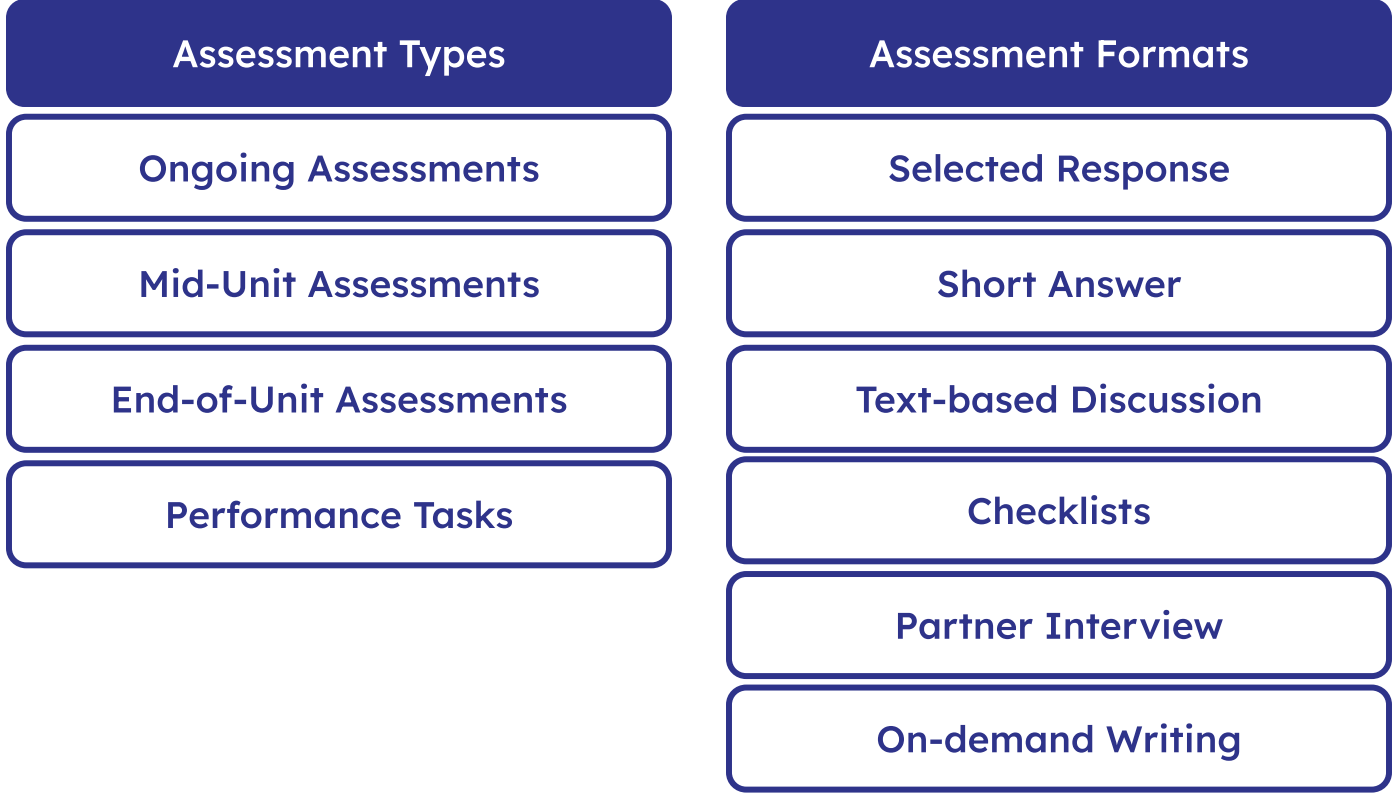
How many modules are there in a year? _____

How many units are there in a module? _____

EL Education Structure and Design: The Four T's



EL Education Structure and Design: Module and Unit Assessments



Platform Exploration

Module Overview and Video	
Unit Overview and Unit at a Glance	

Reflection: How will resources at the module and unit level support teachers during implementation?

Supports for Lesson Planning: Lesson Components



Each Imagine Learning EL Education lesson has a consistent structure.

Support for Lesson Planning: Read-Think-Talk-Write Cycle



Read: _____

Think: _____

Talk: _____

Write: _____

Platform Exploration

About this Lesson Tab

Lesson Narrative

Opening

Work Time

Closing

Reflection: What supports for teachers and students are available at the lesson level?

Year-long Support

Beginning of the Year

What supports are needed?

How will teachers receive support?

Middle of the Year

Glows and Grows (both for your supports and teacher behavior)

Reflection: What are my next steps in planning to support implementation?

3-2-1 Exit Ticket

3 things you were excited to learn today

1. _____
2. _____
3. _____

2 actions you will take to prepare for implementation

1. _____
2. _____

1 question you still have

1. _____

