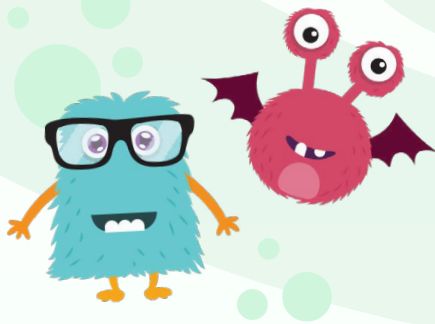


Flexible Implementation of Imagine Science Corner™ K–5

Support your core science program with engaging video content and student-driven investigations



With resources for both online and offline learning, Imagine Science Corner supports a variety of implementation models to meet the unique needs of elementary classrooms.

- Engage learners with video lessons designed for use every other week to supplement your core science program and deepen their understanding of grade-level science concepts
- Increase student engagement with real-life applications via optional student-driven Project-Based Learning (PBL) Investigations
- Implement seamlessly with comprehensive educator supports

Choose from a variety of learning models

Leverage a blend of instructional resources to fit students' needs and meet your district learning goals.



Grade Level Pathways

Students follow default grade level pathway for 20-min sessions every other week.

Use the optional vocabulary printable at the lesson level to reinforce scientific terminology in class or as homework.



Performance-Based Assessment

Implement a student-driven PBL Investigation from one of the scientific domains per grade level.

Designed for multi-week implementation to flexibly meet your needs.



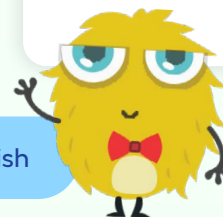
Customize on Demand

Use Assignment Builder to create custom learning pathways.


Align to your core science curriculum or assign specific instructional content to individual students.




Equitably accessible in English and Spanish




Optimized for varied implementation models to suit your needs




In-Class Rotation




Computer Lab Rotation




Whole Class Instruction



Small-Group Instruction



Before/After School Instruction

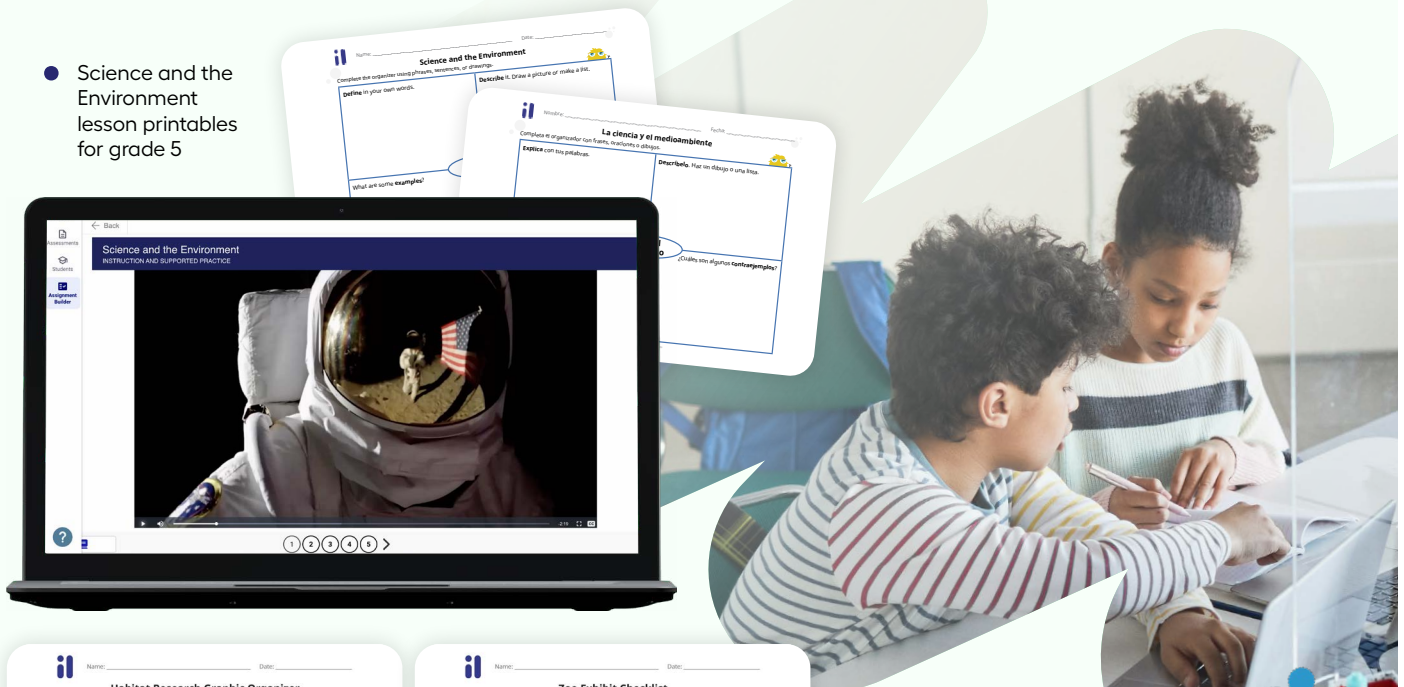


Summer School

Integrate online and offline materials for increased scientific understanding



- Open-and-go lessons that spark science curiosity in every student
- Optional Project-based Learning Investigations with engaging, complex performance tasks to empower students with critical 21st-century skills
- Optional Vocabulary Printables to improve academic discourse by reinforcing science terminology

- Science and the Environment lesson printables for grade 5



Habitat Research Graphic Organizer

During the Gallery Walk, make observations and read the information displayed on each poster. Complete the chart below.

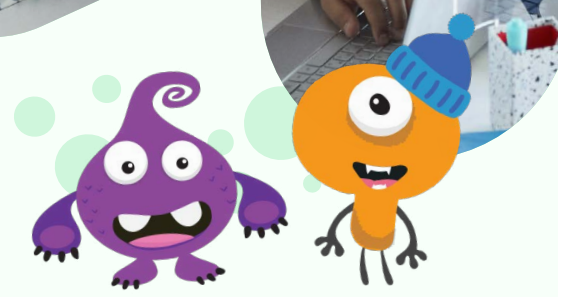
Habitat	Characteristics of the Habitat and Plants and Animals Living There	Interesting Facts You Learned
 Grassland	Elephants, giraffes, and lions live in the African savanna.	There are two types of grasslands: temperate and tropical.
 Polar		

Zoo Exhibit Checklist

Use this checklist to make sure your final product is meeting the requirements.

Information to Include	Questions to Consider	Is This Included?
Habitat: Characteristics	<ul style="list-style-type: none"> Does our product include the name of the habitat we researched? Does our product show or describe the details of the habitat? 	<input type="checkbox"/>
Habitat: Plants and Animals	<ul style="list-style-type: none"> Does our product show or list a variety of the plants and animals that live in this habitat? 	<input type="checkbox"/>
Animals: Characteristics	<ul style="list-style-type: none"> Does our product show or describe the details of each animal in the habitat? Body coverings (hair, fur, feathers, scales, shells) Body parts (arms, legs, wings, tails, fins) Ways of moving (swimming, crawling, flying, burrowing) 	<input type="checkbox"/>

- Habitat Wonders PBL Investigation for grade 3



imaginelearning.com/science-corner
877-725-4257 • solutions@imaginelearning.com

