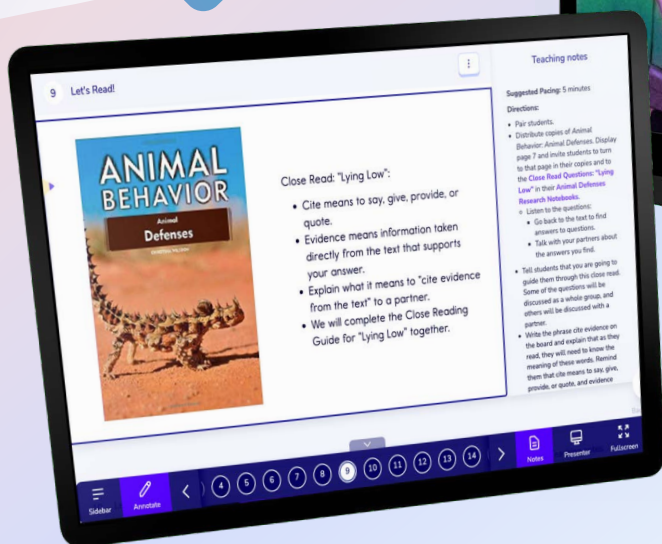


FOR GRADES K-8

Expand Your Literacy Experience

Imagine Learning's core and supplemental solutions provide equity and access to ELA content aligned to the science of reading



Science-Backed Pedagogy for Lifelong Literacy Success

Engaging solutions that develop critical reading skills for all students

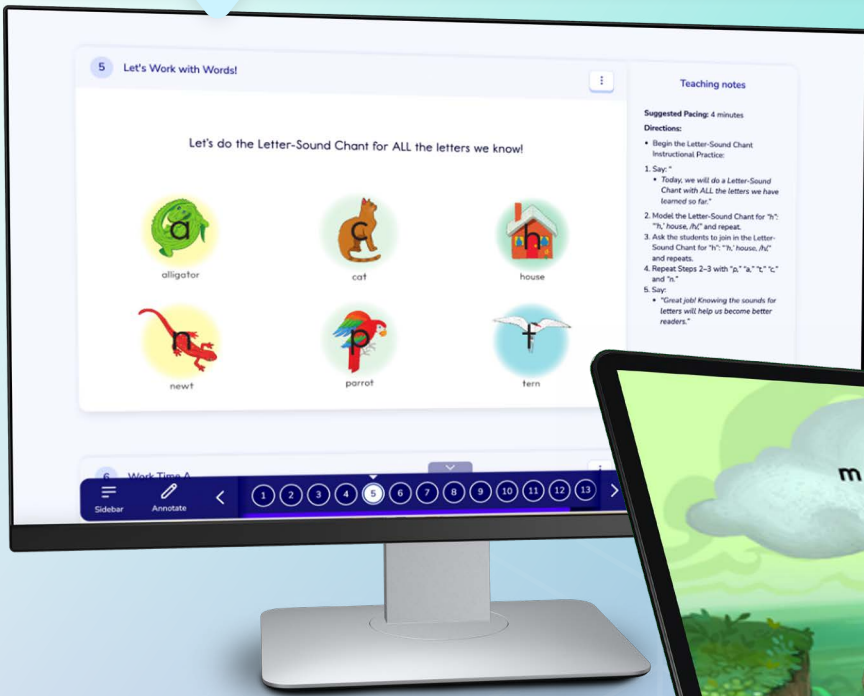
Imagine Learning helps educators and students in kindergarten through 8th grade engage with content rich curriculum aligned to reading science. As a result, students develop the critical skills that lead to becoming increasingly strategic and automatic skilled readers. **Imagine Learning EL Education** and **Imagine Language & Literacy**® are digital-forward, standards-based solutions that deliver inclusive instructional routines, immersive activities, and authentic connections to the real world to support students' language, comprehension, and character development.



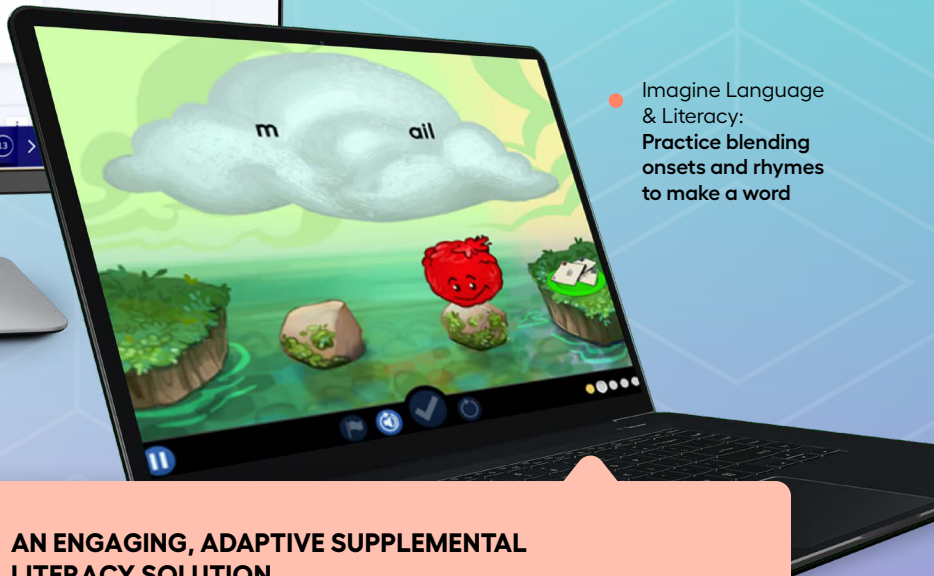


A COMPREHENSIVE, DIGITAL-FORWARD CORE LANGUAGE ARTS PROGRAM

Imagine Learning EL Education is designed to empower students to not only master knowledge and skills but also showcase their exceptional work while cultivating essential character traits. Grounded in the structured phonics approach, the curriculum is designed to help all students become fluent readers.



Imagine Learning EL Education: Letter-sound recognition



Imagine Language & Literacy: Practice blending onsets and rhymes to make a word

Supplemental



AN ENGAGING, ADAPTIVE SUPPLEMENTAL LITERACY SOLUTION

Imagine Language & Literacy offers fun and engaging lessons while providing instruction and practice in all four domains of language — reading, writing, listening, and speaking. As students explore and practice skills, their personalized learning pathway adjusts dynamically to maximize their engagement and progress.

Seamlessly Deliver the Five Components of Reading

The ultimate goal of reading is to “crack the code” by decoding more and more complex words and acquiring automaticity with them. One way of thinking about this relationship between reading comprehension (the goal) and decoding and automaticity (the tools) is through the 5 Components of Reading. Our solutions work together to offer instruction and practice in all areas of language and literacy.



EXPLICIT INSTRUCTION IN PHONEMIC AWARENESS

Imagine Learning EL Education focuses on direct instruction of foundational skills that build word recognition and Imagine Language & Literacy’s adaptive pathways build on that as each learner engages with sounds just right for them.



SYSTEMATIC PHONICS INSTRUCTION

Students learn spelling-sound relationships through a structured phonics approach in Imagine Learning EL Education and practice all 44 sounds and the 70 most common ways to spell them in Imagine Language & Literacy.



METHODS TO IMPROVE FLUENCY

Imagine Learning EL Education explicitly teaches bridging skills that predict reading and Imagine Language & Literacy develops English language proficiency for diverse learners with expressive read-aloud models for K–2 and recorded oral reading.



EXPLORE AND EXPERIENCE VOCABULARY

Students explore word structure and word parts in Imagine Learning EL Education and are exposed to new words in authentic contexts in preparation for reading a text in Imagine Language & Literacy.



WAYS TO ENHANCE LANGUAGE & COMPREHENSION

Students apply comprehension strategies through read-alouds and independent reading in Imagine Learning EL Education and practice those strategies as they work through customized playlists in Imagine Language & Literacy.



● Imagine Learning EL Education: **Student Initial Sound Letter Sort Activity**

Students in Pre-Alphabetic and Early Partial Alphabetic phases drag and drop pictures to sort by the beginning sound in each word.

1 GK M2 C5 L26 More Initial Sound Sorts (Pre-Alphabetic and Early Partial Alphabetic)

Directions: Drag and drop the pictures to sort by the beginning sound in each word.

▶ Play

/s/ /v/

Teaching notes

More Initial Sounds Sort

Images include: snake, volcano, vacuum, vet, volleyball, vine, visitor, submarine, scissors, six, star, salad

Additional Notes:

- Snake icons created by Freepik - Flaticon
- Volcano icons created by Good Ware - Flaticon
- Volcano icons created by Smashicons - Flaticon
- Vacuum cleaner icons created by photoidea_studio - Flaticon
- Veterinarian icons created by photoidea_studio - Flaticon
- Volleyball icons created by Freepik - Flaticon
- Vine icons created by Freepik - Flaticon
- Visor icons created by Freepik - Flaticon
- Submarine icons created by Freepik - Flaticon
- Scissors icons created by Freepik - Flaticon
- Six icons created by Freepik - Flaticon
- Star icons created by Freepik - Flaticon
- Sand bucket icons created by Freepik - Flaticon
- Salad icons created by Freepik - Flaticon

Scoring Per Question (default)
Total points: 0

Two images: a bowl of soup and a sink, with an arrow pointing from the soup to the sink.

Three musical notes on a staff, with the first two having colorful, cartoonish faces. A third empty note box is to the right.

Control icons: play, back, forward, checkmark.

● Imagine Language & Literacy: **Practice Phoneme Manipulation**

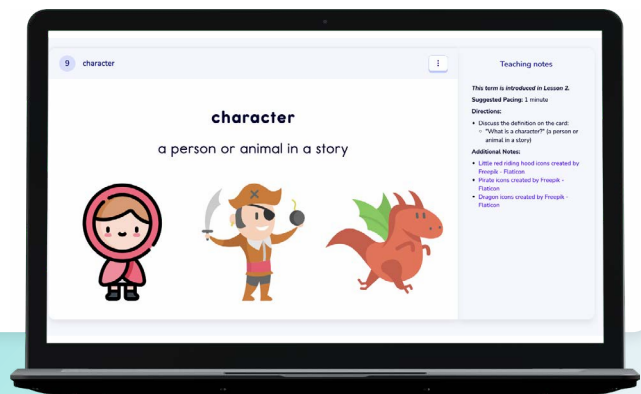
Students add, remove, or substitute the initial, medial, or final phonemes in one-syllable words to make new words.

Intentionally Designed to Support English Language Learners

Equitable access for all students

Imagine Learning EL Education is designed with seamlessly integrated, comprehensive support for English language learners (ELLs), helping them actively engage with the compelling and challenging core curriculum through:

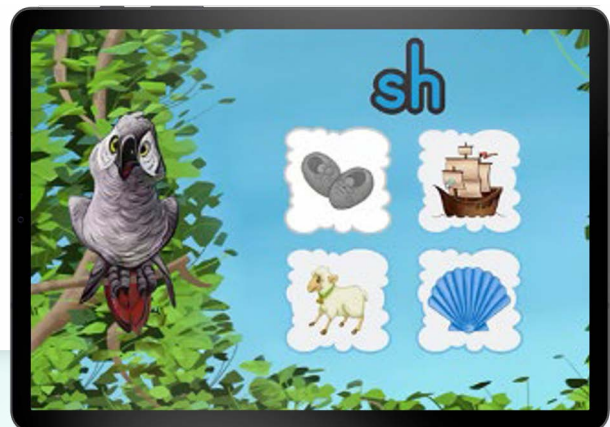
- **Content** — content-based language and literacy instruction with appropriate scaffolding, strategic grouping, and intentional levels of support
- **Conversation** — conversation Cues and Language Dives open conversation about meaning, purpose, structure, and academic thinking
- **Contribution** — engaging texts and activities honor cultures and backgrounds with opportunities for using home language and creating meaningful connections between home and school



- Imagine Learning EL Education: **Vocabulary Toolkit** supports all students with scaffolding and explicit instruction

Imagine Language & Literacy provides instruction and practice in all components of literacy in context with visual and verbal scaffolds to help English learners develop proficiency in their new language.

- **Provides first-language support** — human-voiced audio support is available in 15 languages; support is strategically withdrawn as students become more proficient in English
- **Enables cross-linguistic connections** — students recognize initial sounds in English that are also used in their first language, as well as English sounds not found in a student's first language
- **Builds on language commonalities** — students learn about rhyme in their first language to build background knowledge before they're taught rhyming in English



- Imagine Language & Literacy: **Discover New Sounds**

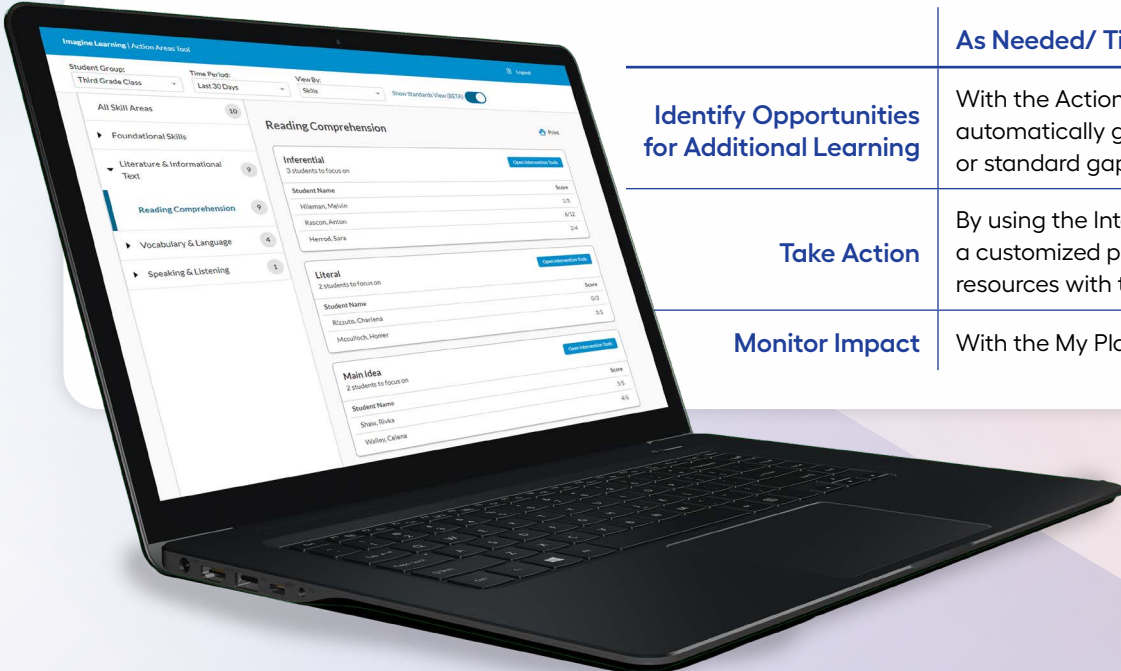
Tier 2 Intervention: Enhancing Literacy and Language Skills

Promoting proficiency through targeted support

Imagine Learning EL Education ensures an inclusive and effective learning environment by integrating the Universal Design for Learning (UDL) framework. This means that the curriculum is designed from the outset to meet the learning needs of all learners during core instruction, cutting down on the need to reteach or adapt learning experiences.

Imagine Language & Literacy enables you to quickly and easily identify and support students who need intervention. The Action Areas Tool automatically groups students who need additional support with a specific skill or standard and suggests supplemental print or digital content to address these gaps.

IMAGINE LANGUAGE & LITERACY ALLOWS EDUCATORS TO:



	As Needed/ Tiers 2 & 3
Identify Opportunities for Additional Learning	With the Action Areas Tool that automatically groups students by skill or standard gaps
Take Action	By using the Intervention Tool to assign a customized playlist of recommended resources with the click of a button
Monitor Impact	With the My Playlist Report

Education + imagine language & literacy®

Two solutions to meet the needs of all students

Use Imagine Learning EL Education for core ELA instruction and supplement student learning with Imagine Language & Literacy during:



One-on-one or small group intervention



Computer lab or independent practice



Before/after school instruction



At-home or virtual practice

 imagine
learning
empower potential™

imaginelearning.com/literacy

877-725-4257 • solutions@imaginelearning.com