

Grades K-3

Assessment

# imagine plus screener

A game-based assessment tool that identifies students in grades K-3 at risk of dyslexia and other reading challenges



il



# Fun for Students and Easy for Educators

## Streamlined screening that yields powerful results

Imagine+ Screener is designed to feel like a game, making early literacy assessment fun and stress-free for students. Its intuitive interface supports independent work, while automated scoring minimizes teacher workload.



### Game-based approach engages students and supports independent work

Students navigate an interactive, self-directed experience, making the screening process engaging and effective. By integrating adaptive technology, the assessment meets each learner where they are, ensuring an accurate measure of literacy skills.

### Scoring is largely automated for efficiency

With auto-scoring and computer-adaptive testing, any adult can quickly administer the assessment. The data dashboard provides detailed subtest scores and flags students most at risk for dyslexia and significant word reading challenges. Designed to be administered as a benchmark assessment three times per year, Imagine+ Screener is easily implemented in MTSS/RTI programs.

### No specialized teacher training required

Educators can quickly administer assessments without specialized training. The platform's automated scoring and easy-to-use dashboard provide teachers with clear insights into each student's literacy skills and areas of need.









# Comprehensive Early Literacy Assessment

## Covers all critical literacy skills foundational to reading success

Developed by early literacy experts and aligned with the science of reading, Imagine+ Screener assesses skills that predict future reading proficiency.

Using research as our guide, Imagine+ Screener includes the best assessments for predicting dyslexia and reading success in both language comprehension and word recognition, including:



Phonemic awareness



Phonics



Vocabulary



Comprehension

### AI speech recognition tools assess oral language skills

Imagine+ Screener leverages AI speech recognition technology to assess the oral language skills students need for proficient reading, ensuring accurate measurement.

### Computer adaptivity provides precise insights

Imagine+ Screener adjusts to each student's responses, helping teachers identify reading strengths and weaknesses. By adapting to skill levels in real time, educators gain precise insights into students' strengths and areas for improvement.

### Research-based and scientifically-tested for results you can trust

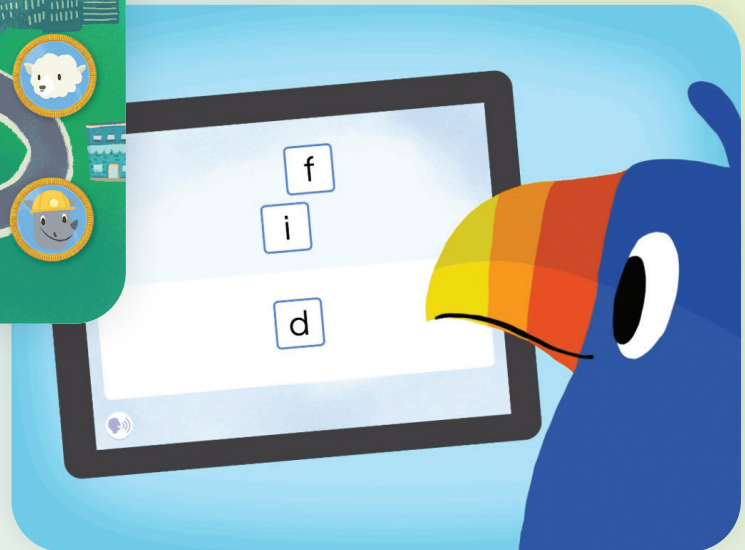
Imagine+ Screener leverages the ground-breaking research of leading literacy experts and scientists.

- Developed and scientifically validated at Boston Children's Hospital in partnership with faculty at the Florida Center for Reading Research
- Peer-reviewed by the National Center on Intensive Intervention (NCII)





- Pip is a trusted guide who helps students learn!



- As students take a self-directed journey through the city, they meet animal friends and receive rewards as they complete each subtest.



# Insights and Resources for Prescriptive Intervention

## Data-driven recommendations support confident daily instruction

### Real-time analytics pinpoint precise student needs

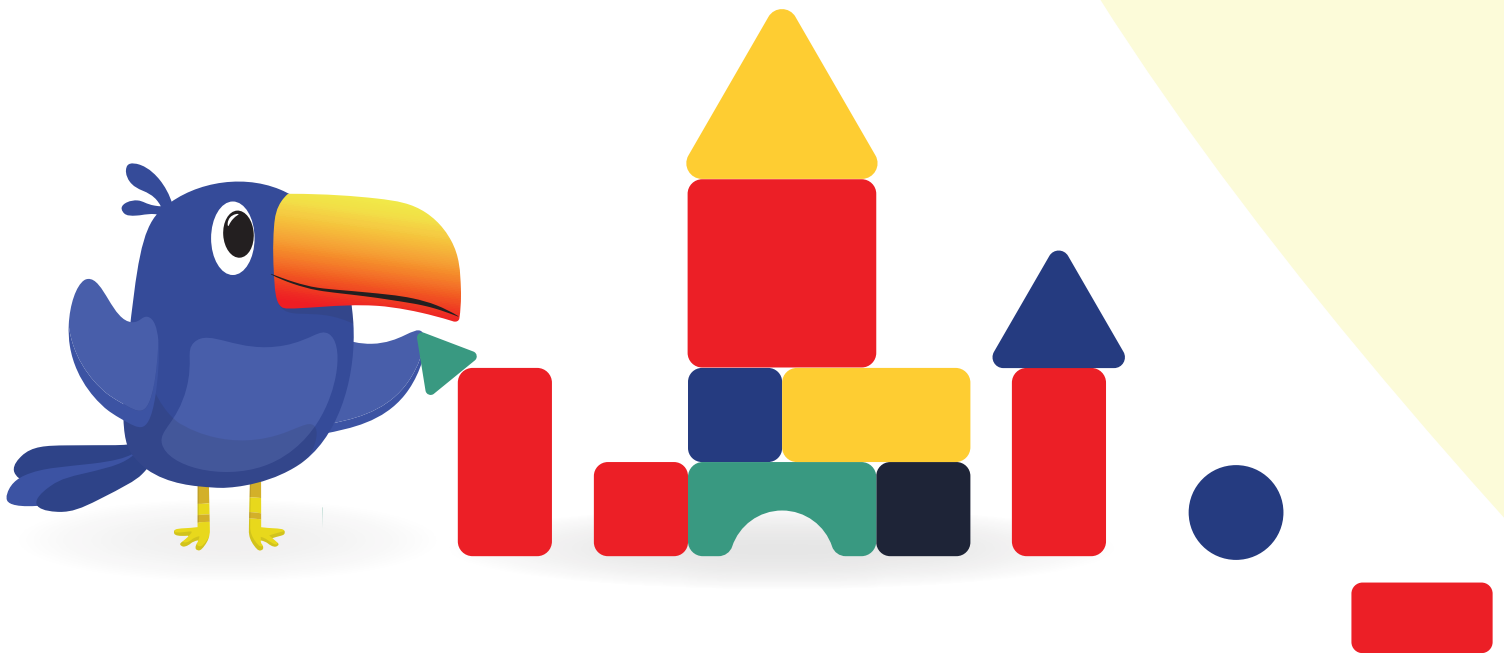
Educators gain a clear picture of each student's literacy strengths and challenges with real-time analytics. By identifying specific skill gaps early, teachers can make informed instructional decisions to support every learner.

### Actionable next steps for early intervention

Imagine+ Screener offers targeted, research-backed strategies to help educators intervene early and guide students toward grade-level literacy skills.

### Seamless instructional integration and educator resources

Imagine+ Screener aligns with any curriculum, equipping teachers with a comprehensive, evidence-based library of lesson plans, activities, tips, and tools to integrate intervention strategies into daily instruction seamlessly. With easy-to-interpret data and actionable next steps, educators can confidently intervene to support every student on their unique reading journey.





A cartoon blue toucan with a large, colorful beak (yellow, orange, and red) is wearing a green backpack and holding a yellow pencil. It is standing next to a calendar grid. The calendar shows the following dates: 30th, 50th, 91st, 45th, N/A, 20th, and 23rd.





## Promote future reading success

Assess key literacy skills to identify students at risk of dyslexia and other reading challenges with a screener developed by early literacy experts and aligned to the science of reading.



[imaginelearning.com/assessment](https://imaginelearning.com/assessment)

877-725-4257 • [solutions@imaginelearning.com](mailto:solutions@imaginelearning.com)